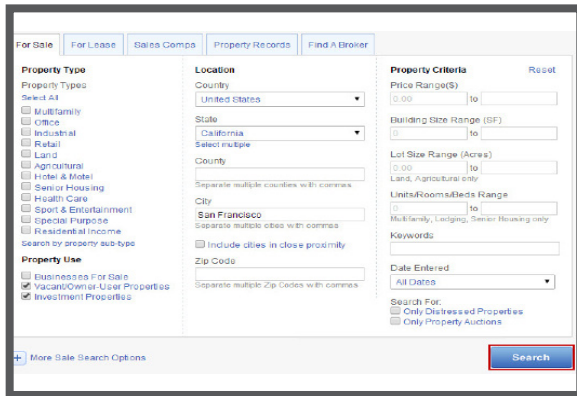


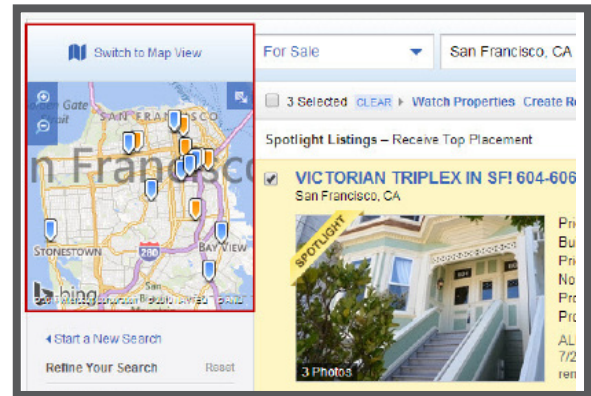
Map Search for Properties

Find Properties in a Geographical Region Using a Dynamic Search Interface including NEW Polygon Search

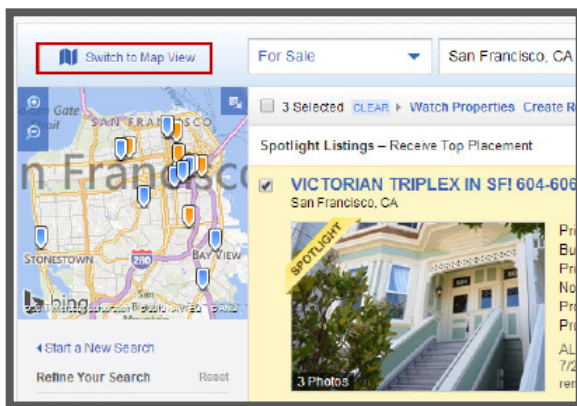
- 1 Log in to www.LoopNet.com, and conduct a property search.



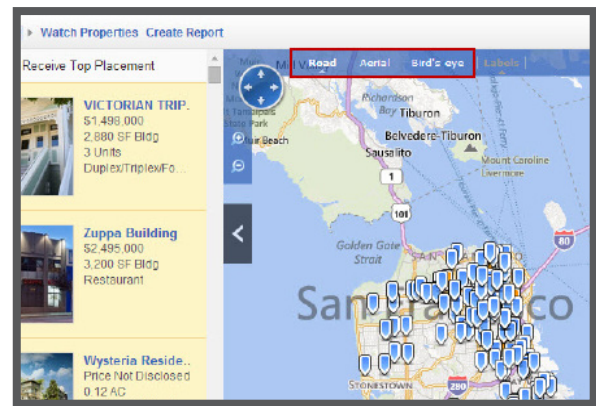
- 2 Locate the map on the top right-hand side of the page.



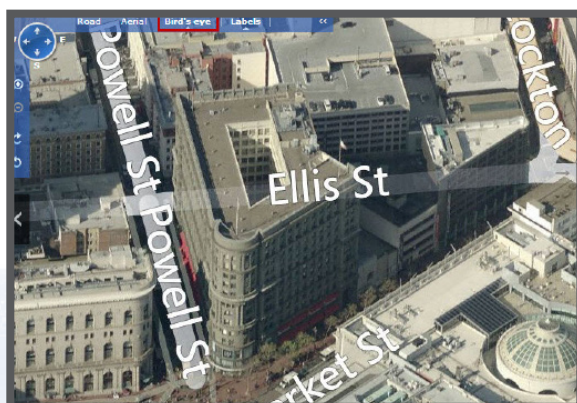
- 3 Click **Switch to Map View**.



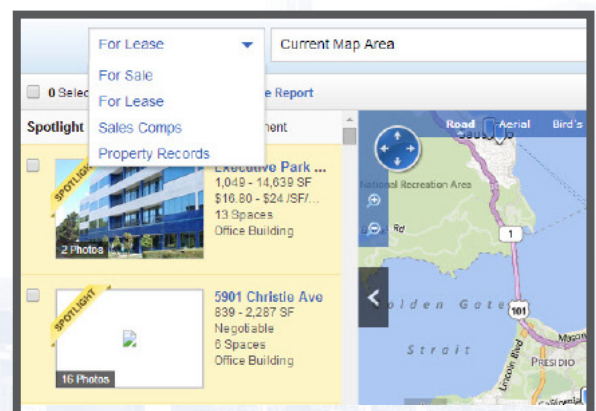
- 4 To change the view of the map, choose **Road**, **Aerial** or **Bird's Eye**. Zoom in or out with the magnifying glasses.



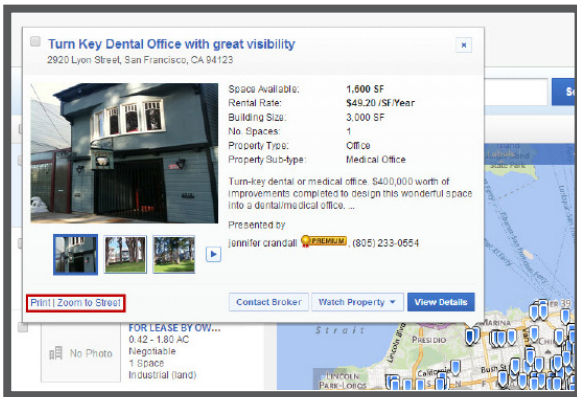
- 5 When on Bird's Eye View, drag the image to view different properties. Rotate the camera angle with the clockwise and counterclockwise arrows.



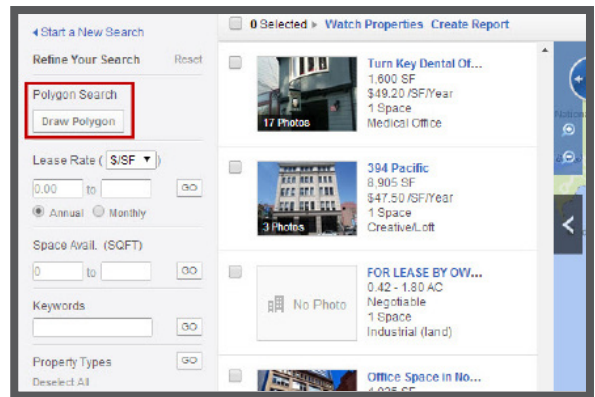
- 6 Change search criteria to pull up different results.



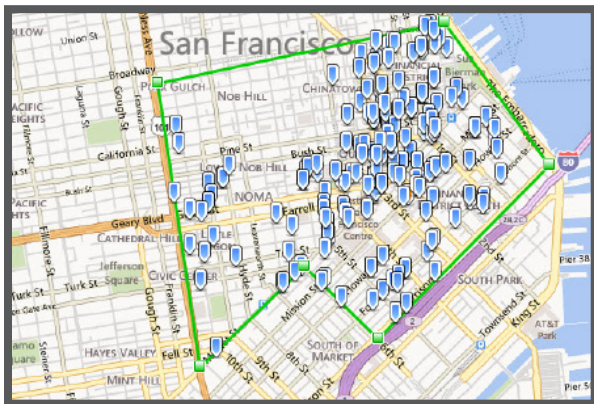
- 7 Click on a marker to view a snapshot of the listing. Click **View Details** to get detailed information on the property. Click **Zoom to Street** to get an up close view of the property's location or click **Print** to easily print the listing .



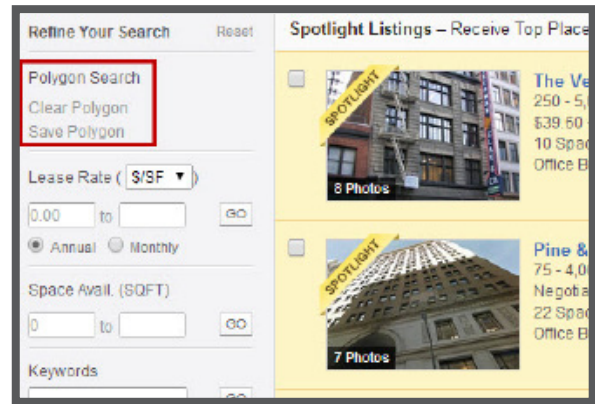
- 8 To focus on a particular area of the map, click **Draw Polygon**.



- 9 Click points on the map to draw a shape bordering the area in which you want to find properties. Easily adjust the shape by dragging the green boxes.



- 10 You can **Clear Polygon** to start a new search and/or **Save Polygon** to use your polygon later.



Start Now!

(Takes you to Search Properties)